



**WORLD'S BEST
ALLOY BULLBARS**

East Coast Bullbars (ECB Pty Ltd)

Tel: 07 3897 5700

Fax: 07 3283 1168

ecb@ecb.com.au www.ecb.com.au

29 Snook St
Clontarf QLD 4019
Australia

Po Box 122
Margate QLD 4019
Australia

EAT105SY

REPLACES: 18.02.10

REVISED: 29.06.10

FITTING INSTRUCTIONS

TOYOTA LANDCRUISER 200 SERIES 11/07 ON ECB ARC™ PROTECTION BAR VEHICLE FRONTAL PROTECTION SYSTEM (VFPS) FOR AIR BAG & ADR COMPLIANT VEHICLES

Check installation hardware before commencing.

Special tools: T30 Torx bit with suitable driver.

1. Check size of templates as size may vary according to printer. Using a sharp pair of scissors, accurately cut templates (supplied from fitting instructions). **See figure 1.** Mask vehicle from bumper attachment point around bumper so bumper skin is not marked. Hold templates onto vehicle (**See figure 1**) and mark cut line onto bumper skin. Draw straight line between marked points, extend lines to outer fold in plastic bumper at grille area and rear corner of plastic bumper. At rear corner, drop line down corner in plastic to underside of top attachment screw. Screw in rear top of plastic bumper needs to be retained.
2. Lift bonnet
3. Remove grille and headlamp cover, seven plastic push pull clips.
4. Remove three bolts from top of grille. Directly under outer bolts are two grille clips. Slide finger into hole in front of clip and push retainer to side to release clip. Remove grille as part of bumper.
5. Remove plastic splash guards from around tow points; four 10mm head bolts and one plastic 12mm head nut (per side).
6. Remove bumper and grille assembly. Six 10mm head bolts from underside centre of bumper, three T30 Torx head screws from front of wheel arch (per side), and three push pull clips from behind grille. Pull bumper sides outward to release plastic clips from guard edges and plastic bolt clips on inner guard. **NOTE:** To remove from under headlamp, a small flat blade screwdriver may need to be pushed between plastic bumper and steel retaining clip from underneath guard. **See figure 2.**
7. Remove polypropylene infill and aluminium bumper support. Three 17mm nuts per side accessed from holes in front of support.
8. Remove tow hooks. Two 17mm bolts (per side).
9. Trim plastic radiator surrounds to allow fitment of ECB steel mounting bracket. **See figures 3 and 4.**
10. Slide ECB Steel Mounting Bracket onto crash can assembly. Attach using three M12 nuts, spring washers and flat washers (supplied). **Finger tighten only. See figure 5.**
11. Using two M12 x 55 bolts, spring washers and flat washers per side (supplied), refit original tow hooks, through ECB steel mounting bracket to vehicle. **Tighten all bolts.** Tow hook bolts first, followed by crash can bolts. **See figure 6.**
12. Splice ECB indicator/park light into original wiring loome. Use cable locks (supplied). Wiring loome accessible behind headlights.



**WORLD'S BEST
ALLOY BULLBARS**

East Coast Bullbars (ECB Pty Ltd)

Tel: 07 3897 5700

Fax: 07 3283 1168

ecb@ecb.com.au www.ecb.com.au

29 Snook St
Clontarf QLD 4019
Australia
Po Box 122
Margate QLD 4019
Australia

13. Using a jigsaw or similar, cut bumper along marked lines. In centre of bumper under grille, follow lower, most forward fold line. Attach 3mm clip lock trim to cut line of bumper. Trim clip lock ends to suit end of plastic bumper. **See figure 7. WARNING: Cut lines around sides of vehicle do not follow bumper lines.**
14. Refit bumper cover and grille to vehicle.
15. Fit ECB LED indicator / park lights (supplied) into protection bar as per instructions supplied with the LED indicator kit. **NOTE: Ensure park light is to outside. See figure 8.**
16. Attach 6mm clip lock trim (supplied) to top centre of ECB protection bar. **See figures 9 & 10.**
17. Attach protection bar to outside of steel mounting brackets using three ½ x 1 ½ bolts (supplied), washers, spring washers and nuts (per side).
18. Align protection bar with approximately 12mm clearance off bumper and 3-5mm from contacting top of bumper under grille. **See figures 11 and 12. Tighten all bolts.**
19. Fit bash plate to underside of protection bar, using six m6 x 20 bolts, flat washers and Nyloc nuts (supplied).
20. Remove original plastic clips from plastic inner guards. From underside of protection bar mark top hole in plastic inner guard onto rear of protection bar end cap. Drill 6mm (¼ inch) hole through end cap of protection bar.
21. Using m6 x 20 bolt, flat washers and Nyloc nuts, attach 3mm alloy inner guard support to plastic inner guard on wheel side, through lower hole. For upper hole place m6 x 20 bolt through end cap of bar, into alloy inner guard support, through plastic inner guard and large alloy washer, flat washer and Nyloc nut. **Tighten all bolts. See figure 13.**
22. **For vehicles fitted with optional “Hydro Mechanical Semi Active Rollbar”:** On passengers side only: place inner guard front support over ¼ x 1 bolt on lower steel chassis mount, using flat washer and Nyloc nut. **Tighten in position.** Drill two holes in front of inner guard and attach to inner guard front support using two ¼ x ¾ bolts, flat washers and Nyloc nuts. **NOTE:** Bolt must be placed in hole from rear of vehicle. Nut must be to front to stop rubbing on suspension parts. **See figure 14.**
23. Trim inner guards using a sharp knife or scissors. **See figure 15 and 16.**
24. **Tighten all nuts and bolts.**
25. Connect ECB indicator/park light. Ensure wiring is routed in such a manner to avoid any sharp edges etc.
26. **Check all lights for correct operation.**

ENSURE NUMBER PLATE IS CLEARLY VISABLE

Note: When fitting/refitting the licence plate to the vehicle, ensure there is no obstruction to licence plate vision in accordance with local authorities. If required, relocate licence plate to an alternate location.



**WORLD'S BEST
ALLOY BULLBARS**

East Coast Bullbars (ECB Pty Ltd)

Tel: 07 3897 5700

Fax: 07 3283 1168

ecb@ecb.com.au www.ecb.com.au

29 Snook St
Clontarf QLD 4019
Australia

Po Box 122
Margate QLD 4019
Australia

Further VFPS Notes:

- Do not attach VFPS to the vehicle using anchorages not intended for this purpose (e.g. engine mounting bolts).
- Do not use this product for any vehicle make or model, other than those specified by the VFPS manufacturer.
- Do not remove the plaque or label from the VFPS.
- Do not modify the structure of the VFPS in any way.
- No accessory or fitment should project forward of the VFPS forward profile.
- ENSURE THESE INSTRUCTIONS ARE LEFT WITH VEHICLE OWNER AND/OR OPERATOR.**

IMPORTANT INFORMATION

Periodically check bolts and nuts for correct tightness, especially if travelling on rough roads

FITTING KIT

1 – ECB Steel mounting bracket	6 – ½ spring washers
1 – ECB under body guard	6 – ½ nuts
2 – ECB inner guard rear support	12 – m6 x 20
1 – ECB inner guard front support	24 –m6 Flat washers
4 – 20 x 20 x 3 alloy washers	12 – m6 Nyloc nuts
6 – M12 x 1.25 nuts	1 – ¼ nut
10 – M12 spring washers	1 – ¼ flat washer
10 – M12 flat washers	6 – Cable locks
4 – M12 x 1.25 x 55 bolts	1 – ECB LED Indicator / Park light kit
6 – ½ x 1 ½ bolts	1 – 2700mm length, 6mm clip lock trim long
12 – ½ flat washers	1 – 2700mm length, 3mm clip lock trim long



Figure 1: Bumper templates attached. Cut bumper cover removed for photo.

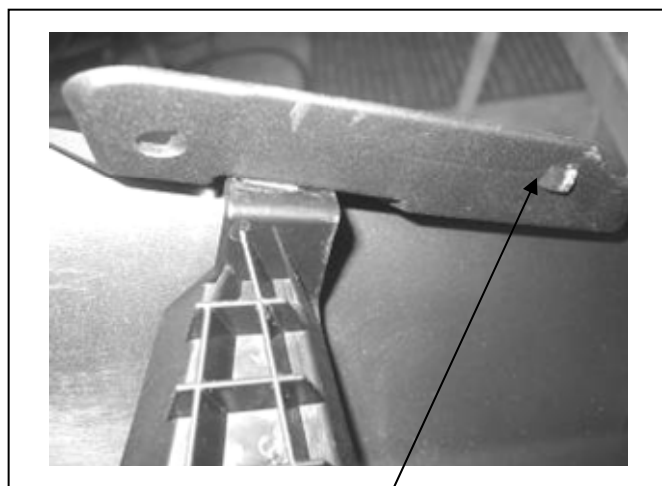


Figure 2: Clip on underside of plastic bumper, shown with bumper removed



**WORLD'S BEST
ALLOY BULLBARS**

East Coast Bullbars (ECB Pty Ltd)

Tel: 07 3897 5700

Fax: 07 3283 1168

ecb@ecb.com.au www.ecb.com.au

29 Snook St
Clontarf QLD 4019
Australia

Po Box 122
Margate QLD 4019
Australia



Figure 3: Approximate trim on passengers side shroud

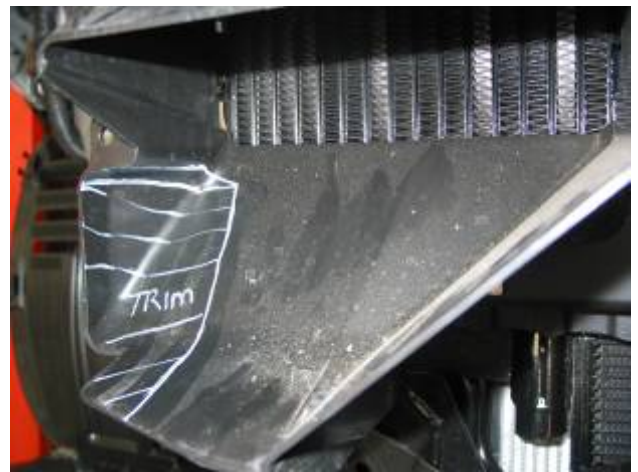


Figure 4: Approximate trim on drivers side shroud

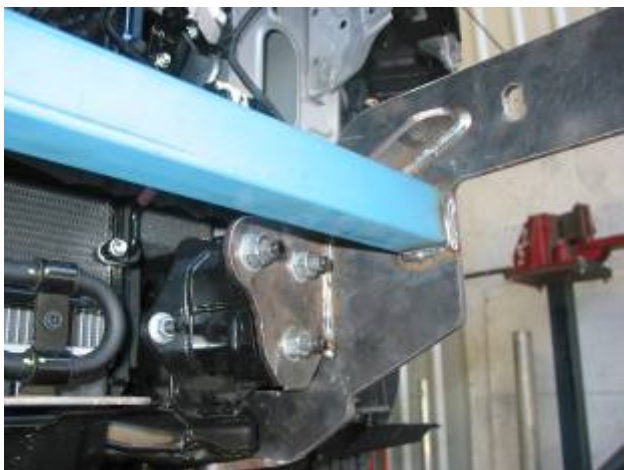


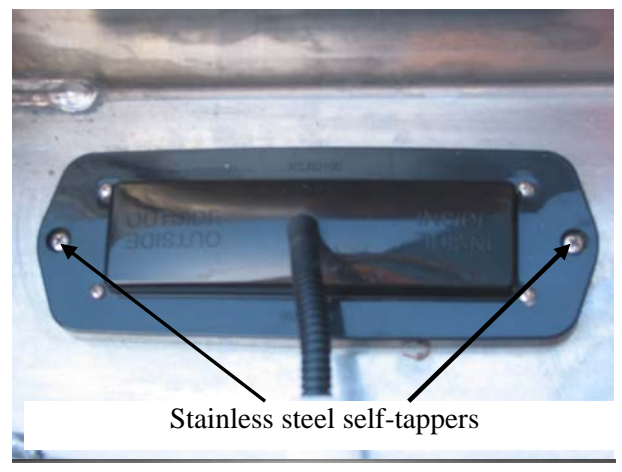
Figure 5: Three bolts to crash can assembly



Figure 6: Bolts through tow hook assemblies



Figure 7: 3mm clip lock, trimmed to suit rear of cut off



Stainless steel self-tappers

Figure 8



**WORLD'S BEST
ALLOY BULLBARS**

East Coast Bullbars (ECB Pty Ltd)

Tel: 07 3897 5700

Fax: 07 3283 1168

ecb@ecb.com.au www.ecb.com.au

29 Snook St
Clontarf QLD 4019
Australia

Po Box 122
Margate QLD 4019
Australia

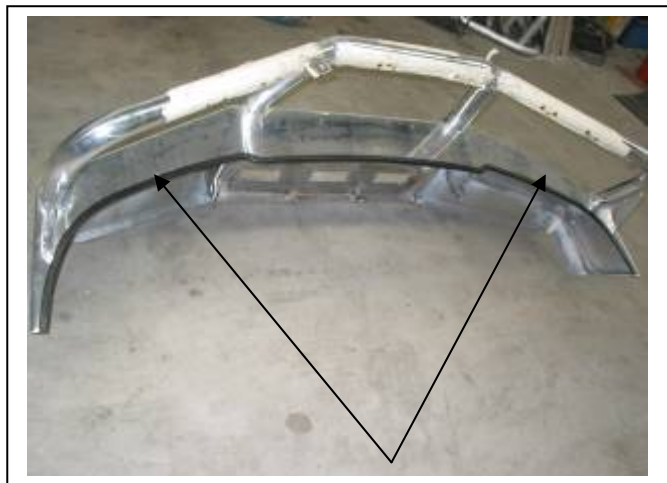


Figure 9: 6mm clip lock trim top view

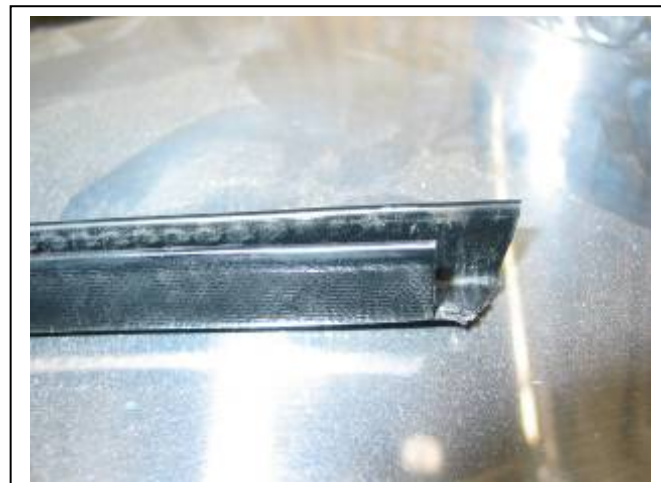


Figure 10: 6mm clip lock trim end trim

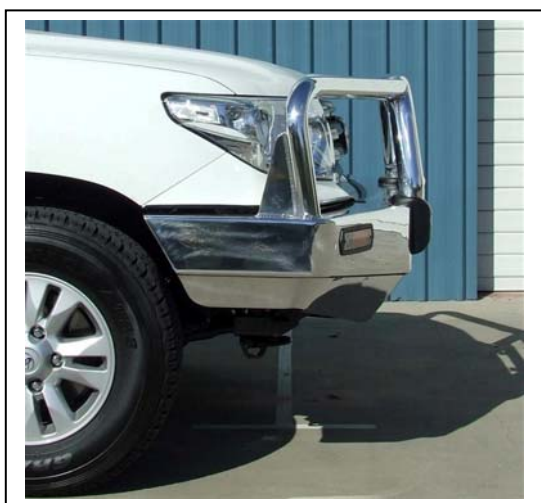


Figure 11: Protection bar side view



Figure 12: Protection bar front view



Figure 13: Inner guard support as seen from between inner guard and bumper.



Figure 14: Front inner guard support. Passenger's side only



**WORLD'S BEST
ALLOY BULLBARS**

East Coast Bullbars (ECB Pty Ltd)

Tel: 07 3897 5700

Fax: 07 3283 1168

ecb@ecb.com.au www.ecb.com.au

29 Snook St
Clontarf QLD 4019
Australia

Po Box 122
Margate QLD 4019
Australia



Figure 15: Inner guard trim, driver's side shown



Figure 16: Inner guard, Passenger's side shown



**WORLD'S BEST
ALLOY BULLBARS**

East Coast Bullbars (ECB Pty Ltd)

Tel: 07 3897 5700

Fax: 07 3283 1168

ecb@ecb.com.au www.ecb.com.au

29 Snook St
Clontarf QLD 4019
Australia

Po Box 122
Margate QLD 4019
Australia

We value your comments

Dear Fitter,

ECB would like to know how you went with the installation of this product. We value your comment and may need to contact you to clarify some details so please complete your contact details clearly.

We would appreciate if you could complete as many of the following details as possible.

Your Name:	Your contact No.
Product Part No.	Product Invoice No.
Product Description:	Make, model, and year of vehicle:
Product Work Order No.	Company your from/Company product purchased from:

Date of Fitment: ____/____/____

Was the fitting hardware supplied complete?

Yes

☐

No

☐

If no what was not supplied

Did the installation go well?

Yes

☐

No

☐

Please provide comments

Please draw diagrams if you need to.

Post to

Reply Paid 122

PO Box 122

Margate QLD 4019

Fax to

(07) 3283 1168



**WORLD'S BEST
ALLOY BULLBARS**

East Coast Bullbars (ECB Pty Ltd)

Tel: 07 3897 5700

Fax: 07 3283 1168

ecb@ecb.com.au www.ecb.com.au

29 Snook St
Clontarf QLD 4019
Australia

Po Box 122
Margate QLD 4019
Australia



**WORLD'S BEST
ALLOY BULLBARS**

East Coast Bullbars (ECB Pty Ltd)

Tel: 07 3897 5700

Fax: 07 3283 1168

ecb@ecb.com.au www.ecb.com.au

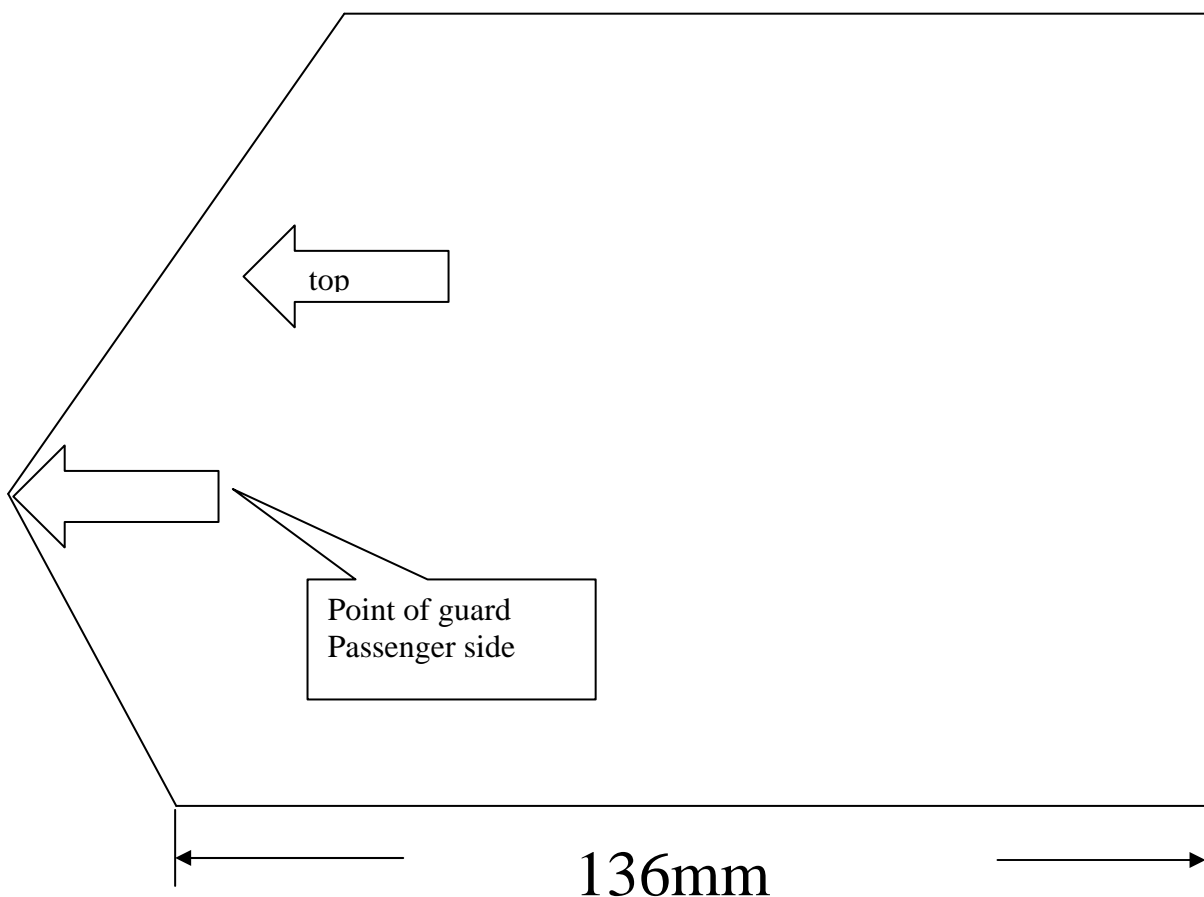
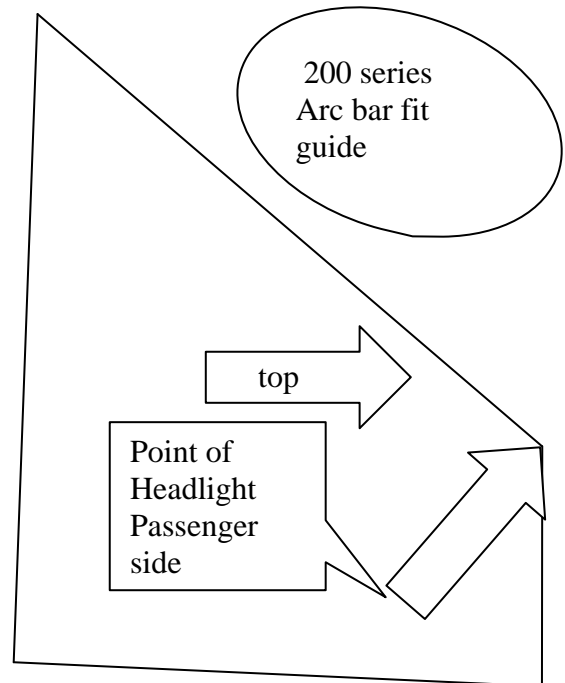
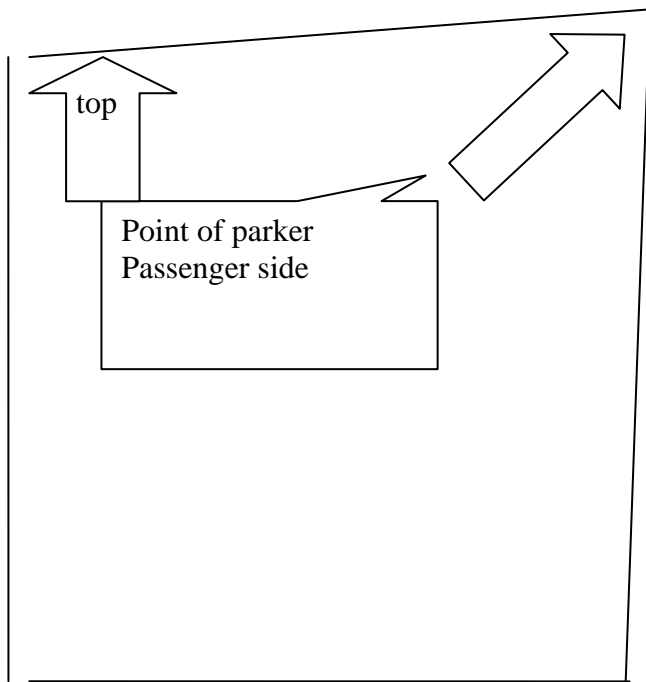
29 Snook St
Clontarf QLD 4019
Australia

Po Box 122
Margate QLD 4019
Australia

Figure 1: Templates

Check measurement as some printers may vary.

Continued next page





**WORLD'S BEST
ALLOY BULLBARS**

East Coast Bullbars (ECB Pty Ltd)

Tel: 07 3897 5700

Fax: 07 3283 1168

ecb@ecb.com.au www.ecb.com.au

29 Snook St
Clontarf QLD 4019
Australia

Po Box 122
Margate QLD 4019
Australia



**WORLD'S BEST
ALLOY BULLBARS**

East Coast Bullbars (ECB Pty Ltd)

Tel: 07 3897 5700

Fax: 07 3283 1168

ecb@ecb.com.au www.ecb.com.au

29 Snook St
Clontarf QLD 4019
Australia

Po Box 122
Margate QLD 4019
Australia

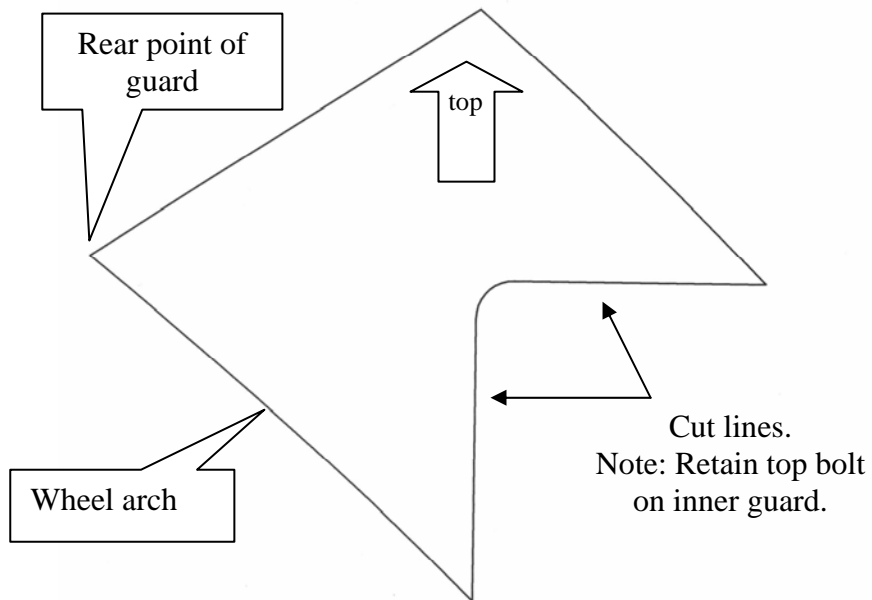


Figure 1: Templates continued.



**WORLD'S BEST
ALLOY BULLBARS**

East Coast Bullbars (ECB Pty Ltd)

Tel: 07 3897 5700

Fax: 07 3283 1168

ecb@ecb.com.au www.ecb.com.au

29 Snook St
Clontarf QLD 4019
Australia

Po Box 122
Margate QLD 4019
Australia



**WORLD'S BEST
ALLOY BULLBARS**

East Coast Bullbars (ECB Pty Ltd)

Tel: 07 3897 5700

Fax: 07 3283 1168

ecb@ecb.com.au www.ecb.com.au

29 Snook St
Clontarf QLD 4019
Australia

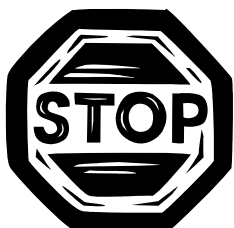
Po Box 122
Margate QLD 4019
Australia

DESPATCH CHECKLIST EAT105SY

Work Order #	
Finish:	
Transport:	
Due Date:	

- ☐ 1 – ECB Steel mounting bracket.
- ☐ 1 – ECB under body guard.
- ☐ 2 – ECB inner guard rear support.
- ☐ 1 – ECB inner guard front support.
- ☐ 1 – Bolt kit.
- ☐ 1 – ECB LED Indicator / Park light kit.
- ☐ 1 – 2700mm length 6mm clip lock trim long.
- ☐ 1 – 2700mm length 3mm clip lock trim long.
- ☐ 2 – ECB overrides – **Fitted to Bar**
- ☐ 6 – 6mm air scoops – **Fitted to Bar**

**See other side of
this page for
photos of all
mounts**



Is this product “the best it can be” Yes _____ / _____
Wrapper's initials / Checker initials
 If **NO** fix before continuing

All parts checked and completed by:

Nut and bolts: _____ Date __/__/__

Order control: _____ Date __/__/__

Final wrap check: _____ Date __/__/__



**WORLD'S BEST
ALLOY BULLBARS**

East Coast Bullbars (ECB Pty Ltd)

Tel: 07 3897 5700

Fax: 07 3283 1168

ecb@ecb.com.au www.ecb.com.au

29 Snook St
Clontarf QLD 4019
Australia

Po Box 122
Margate QLD 4019
Australia

